

Joseph E. Bloom  
Portfolio

# Contents

Resume

Wall Sections

Philadelphia Rowhome

Kitchen Remodel

Cardboard Chair

Villa Savoye

Beech House

Joseph Bloom

1130 East Wilt St • Philadelphia, PA 19125

215-760-7300 • josephearl bloom@gmail.com • www.cadsmith.weebly.com

## Skillsets

### **Construction**

- Construction drawing comprehension
- Carpentry, roofing, siding and decks
- Concrete forms and finish

### **Maritime**

- Vessel systems monitoring and operation
- Ship safety and hazard prevention
- Fire-fighting, rescue and security risk preparation

### **Software Proficiency**

- Autodesk AutoCAD, Revit, Inventor, 3DS Max.
- Microsoft Word, Excel, Publisher
- SketchUp

### **Computer Hardware**

- Complete system builds
- Wired/Wireless networking
- Peripheral device connection

## Education

### Community College of Philadelphia

Expected Graduation: Spring 2014

**Majors:** Construction Management / Computer Assisted Design Technologies

**Current GPA 3.7**

**Relevant completed courses and grade:** AutoCAD (A), Revit I (A), Revit II (A), Construction Materials I (A) & II (B) Building Codes (B), Design Studio I (A), Design Studio II (B), Construction Supervision & Business Practices (A) Surveying (A), Architecture Design and Construction 101 (A)

## Employment history

### **APP Design Studio Philadelphia, PA – October 2013 to Present**

**Draftsman** – Create and update as built drawings for MEP coordination. Conduct product/material research for proper application in the field. Create detail drawings for use in the field. Communicate with engineers/subcontractors about changes or concerns.

### **Spirit Of Philadelphia (Entertainment Cruises) Philadelphia, PA – May 2012 to Present**

**Second Mate (September 2013)** - Supervise and train subordinate members with a higher level of accountability.

**Deckhand** – Assist guests boarding, maintenance, line handling, safety and security of the vessels occupants.

### **Philadelphia Belle Philadelphia, PA – March 2011 to August 2011**

**Senior Deckhand** – Engine checks and maintenance, supervise and train new crew members

**Deckhand** – Assist guests boarding, maintenance, line handling, safety and security of the vessels occupants.

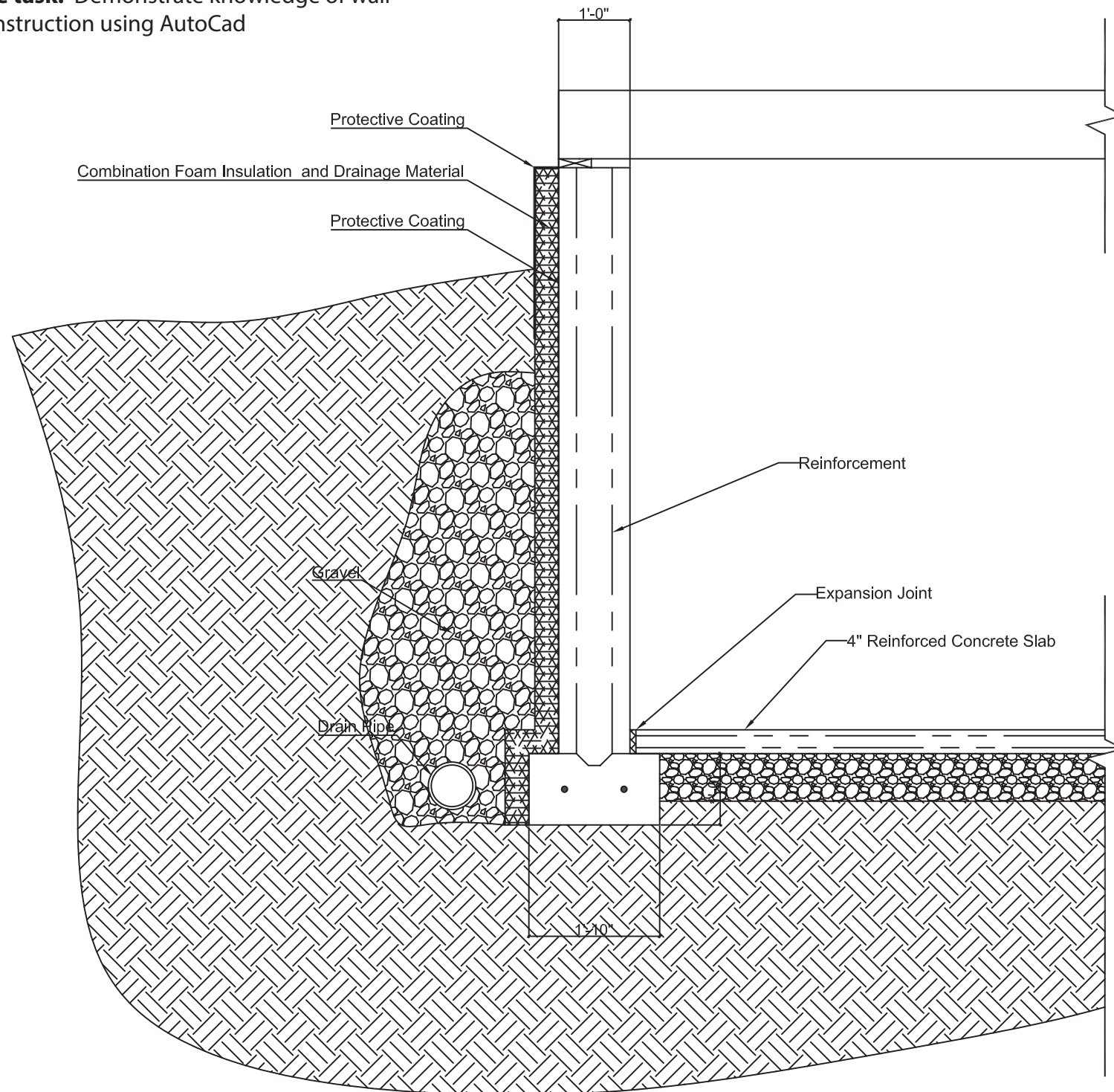
### **Oceanview Architectural Millwork Oceanview, NJ – June 2008 to February 2009**

**CAD/CNC Operator** - Create models of project components in Autodesk Inventor, Enhance project models using Google Sketchup for customer approval, Survey job sites, Operate a 3-axis CNC router, Installation of custom mill-work products

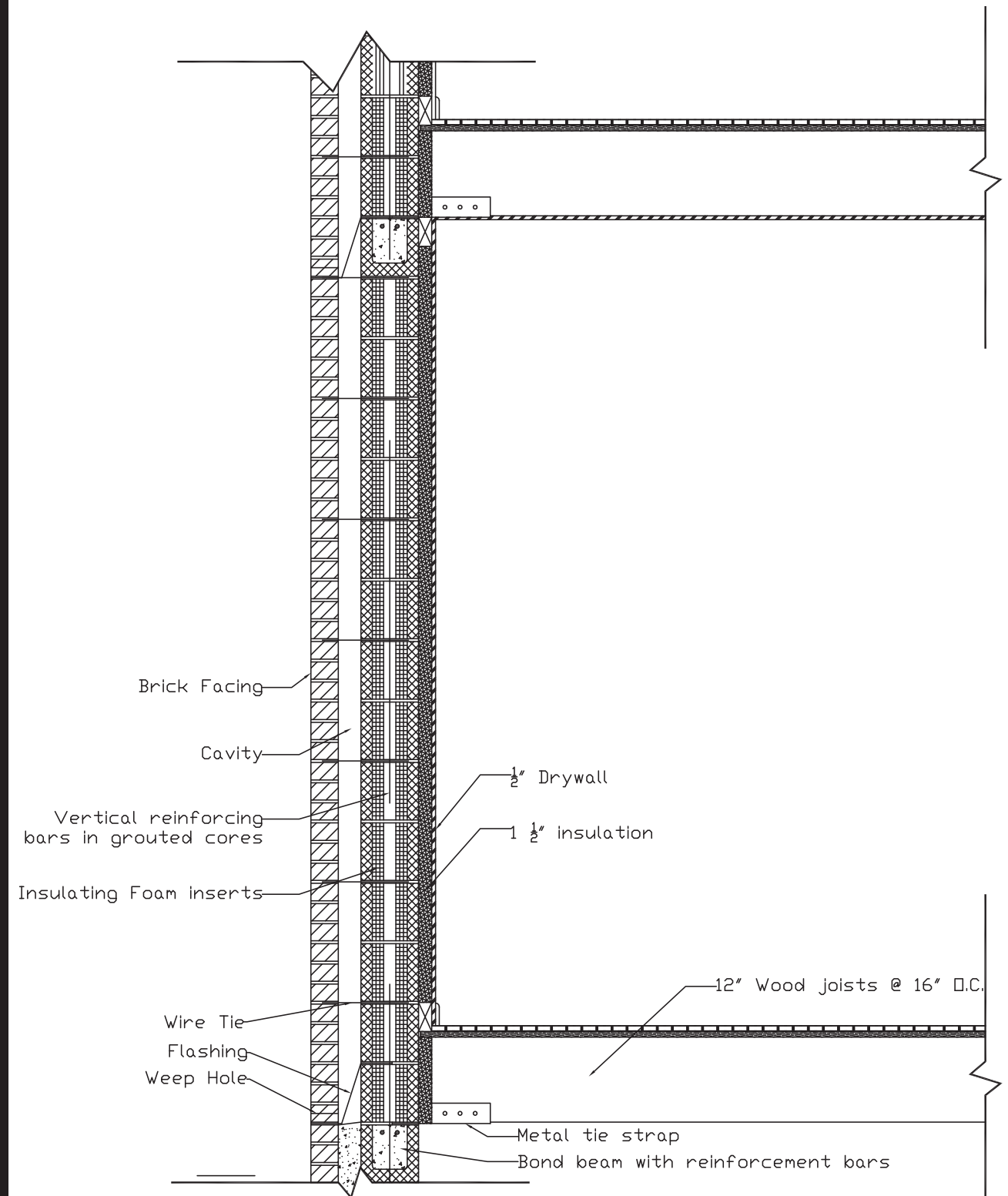
# Wall Details

Course: ADC 112: Construction Materials I

The task: Demonstrate knowledge of wall construction using AutoCad



Foundation Detail



Wall Section Detail

# Philly Rowhome



# Philly Rowhome



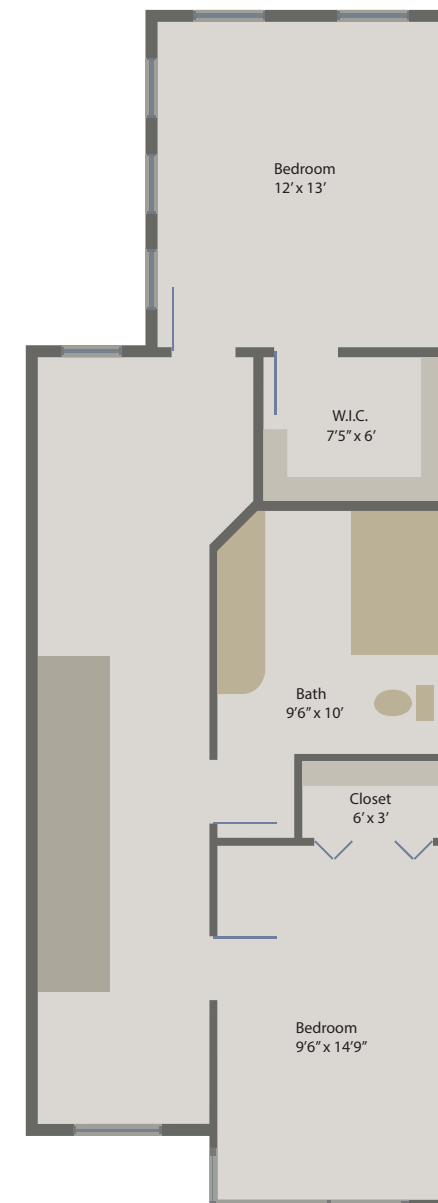
Street Level

**The Task:** Design a Three bedroom Philadelphia style Rowhome that was limited to the a 16 foot wide lot.

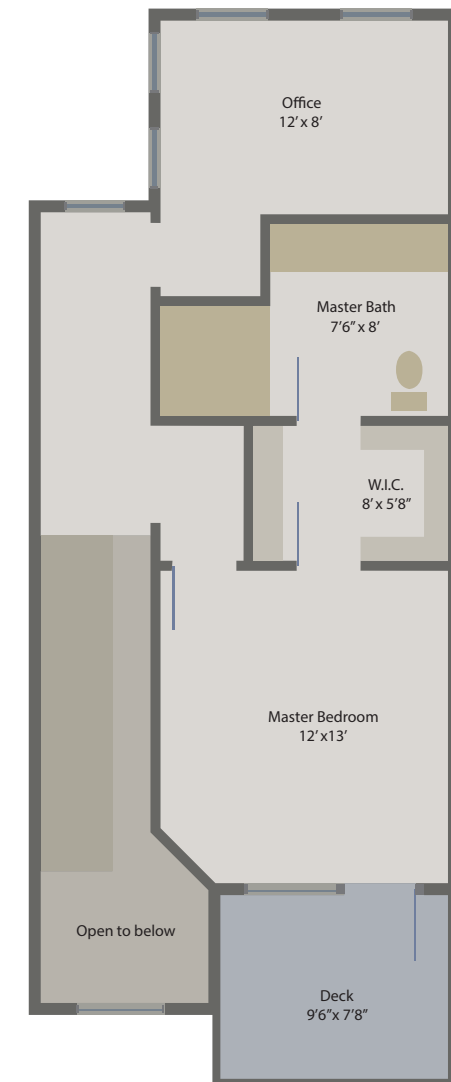
**Approach:** Due to the limitations of natural lighting associated with attached homes, the layout of this rowhome was developed around allowing light to pour in from all available unattached sides.



First Floor



Second Floor



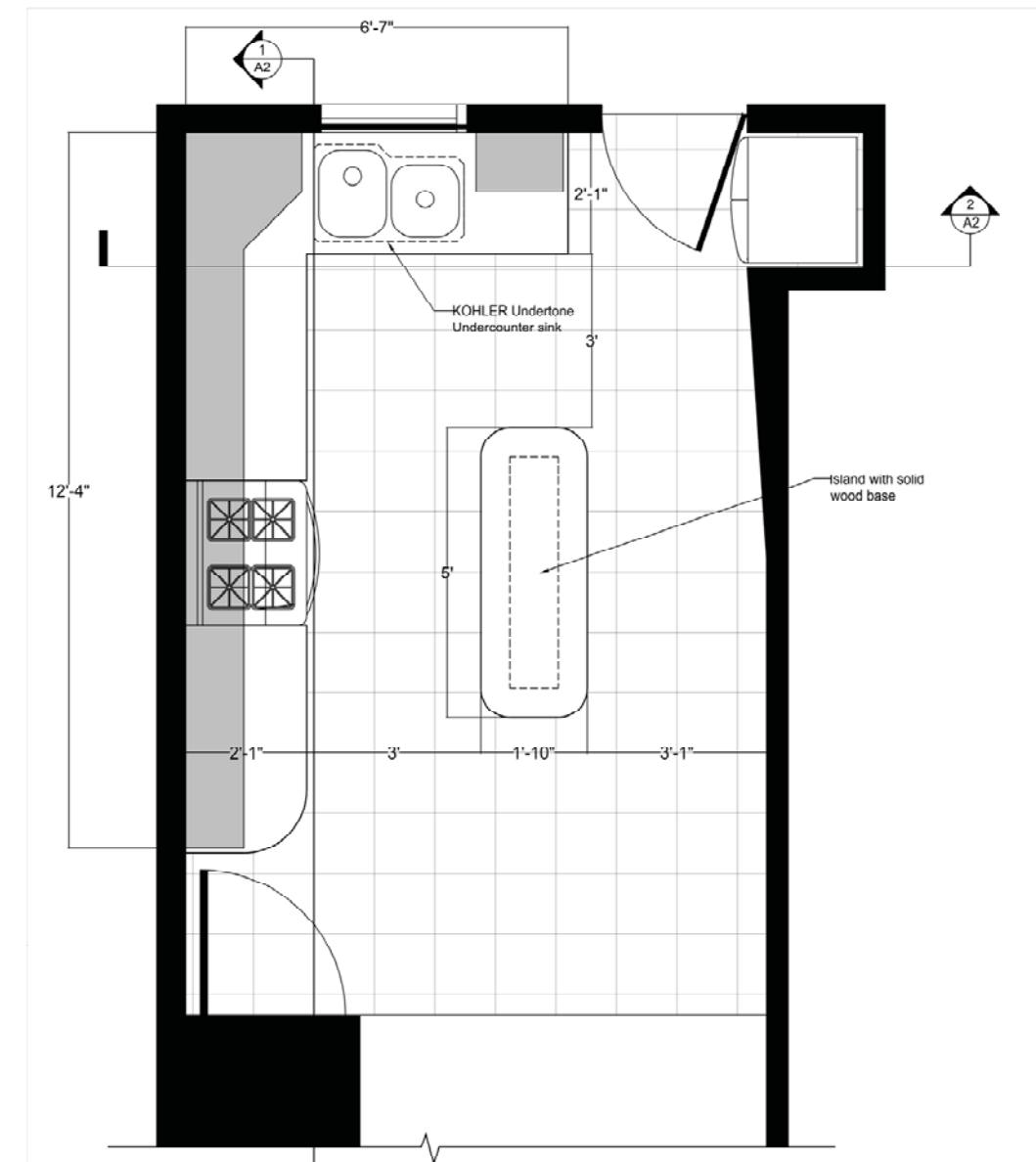
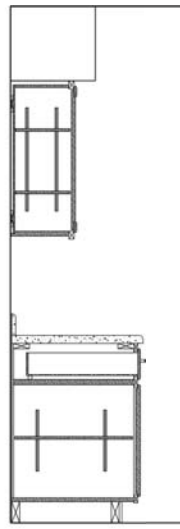
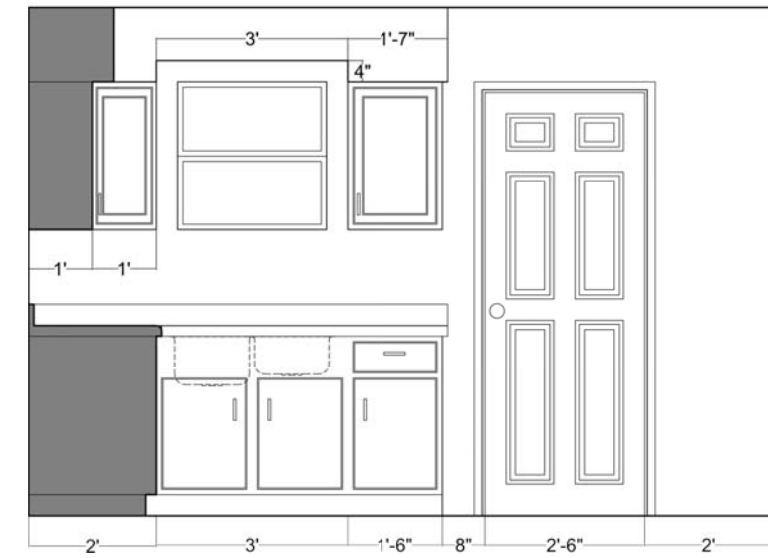
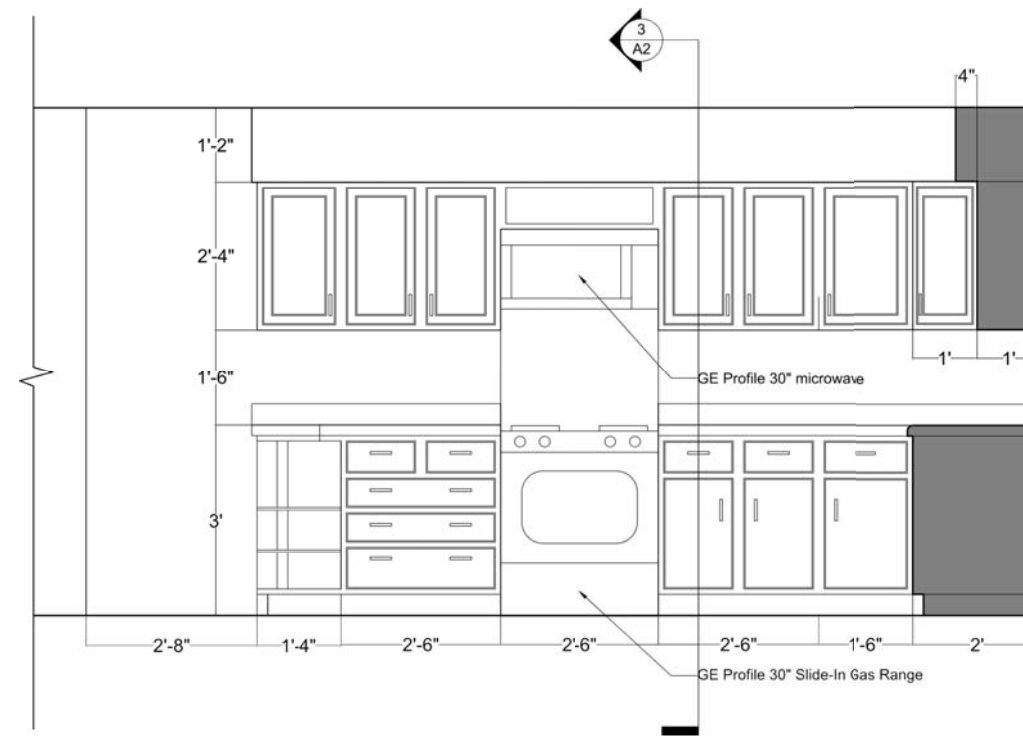
Third Floor

# Kitchen Remodel

**Course:** ADC 212: Construction Materials II

**The task:** Re-design and expand the kitchen of your own home

**Approach:** It is a small two bedroom, Philadelphia style row home ideal for three or less occupants. With limited space for both the dining area and the kitchen, it was only logical to remove the partition wall dividing the two areas. The new space allowed for more cabinetry and a breakfast bar style dining area that seemed to make more sense considering the limited occupancy.



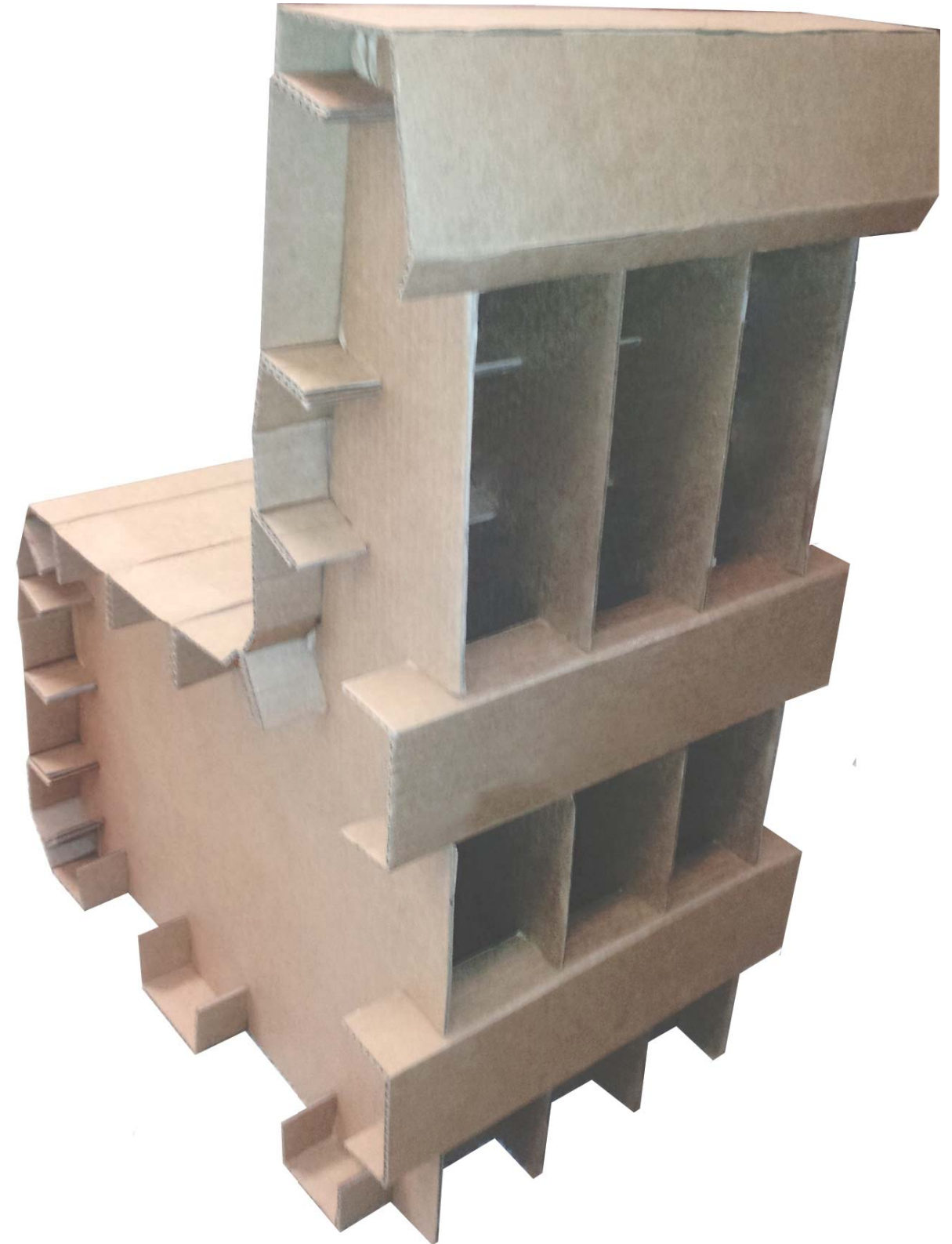
**Course:** ADC 106: Design Studio I

**The Task:** Design and build a cardboard chair that will reliably hold to weight of an average adult.

**The Challenge:** The project was limited to the use of only four sheets of 32" x 40" cardboard, no glue or any other means of fastening. The purpose of the project was to utilize the strength of corrugated cardboard while still being aesthetically pleasing.

**Final product:** The chair held a 250lbs individual with minimal deflection. The chair has since experienced moderate use for six months with only cosmetic deficiencies

# Cardboard Chair



# Villa Savoye



Rendering of front entry

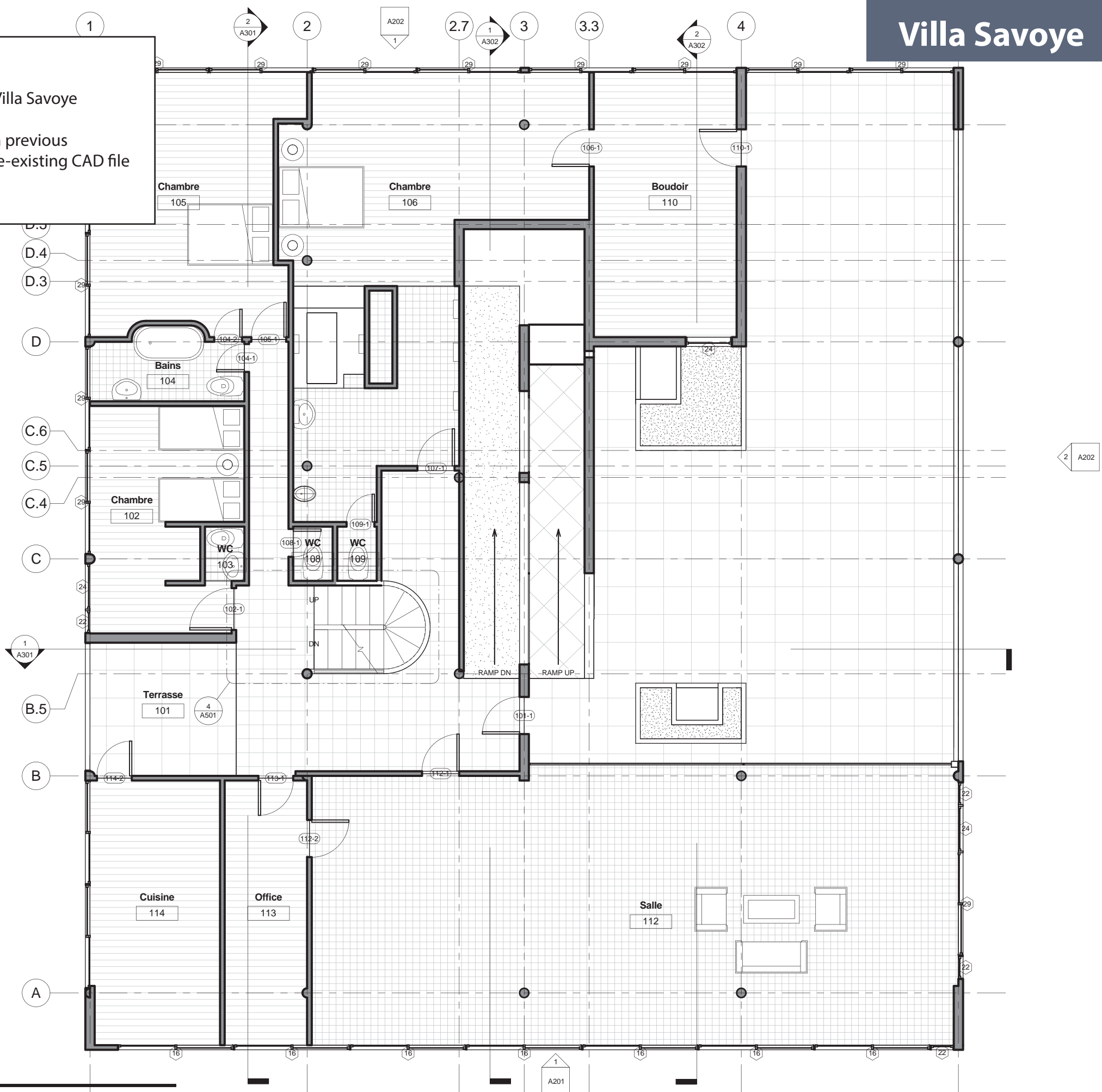


**Course:** ADC 163: Digital Documentation

**The Task:** Create construction documents, 3D views and renderings of the Villa Savoye

**The Challenge:** AutoDesk Revit has a rather steep learning curve, even with previous knowledge of similar types of design software. The project began with a pre-existing CAD file that would be used to outline the building footprint, walls and columns.

First Floor



# Villa Savoye

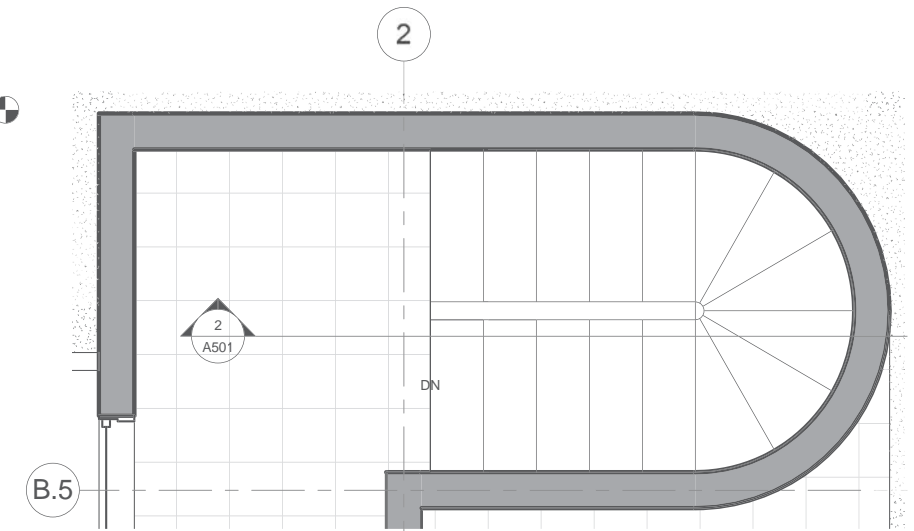
The Stair Core of the Villa Savoye was one of the more challenging elements of this Revit Interpretation. These U-shaped stairs transcend ground level to the Solarium where rooftop planting and scenic views are found.



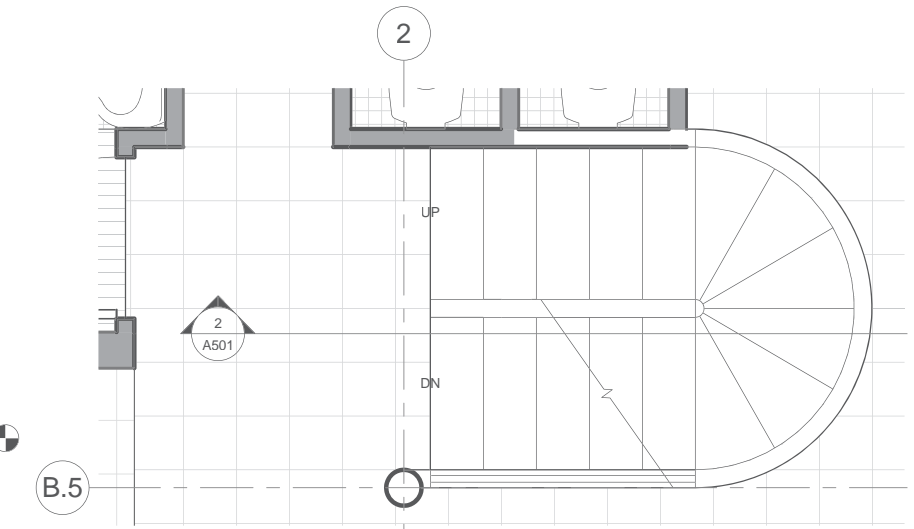
3 Stair Axon



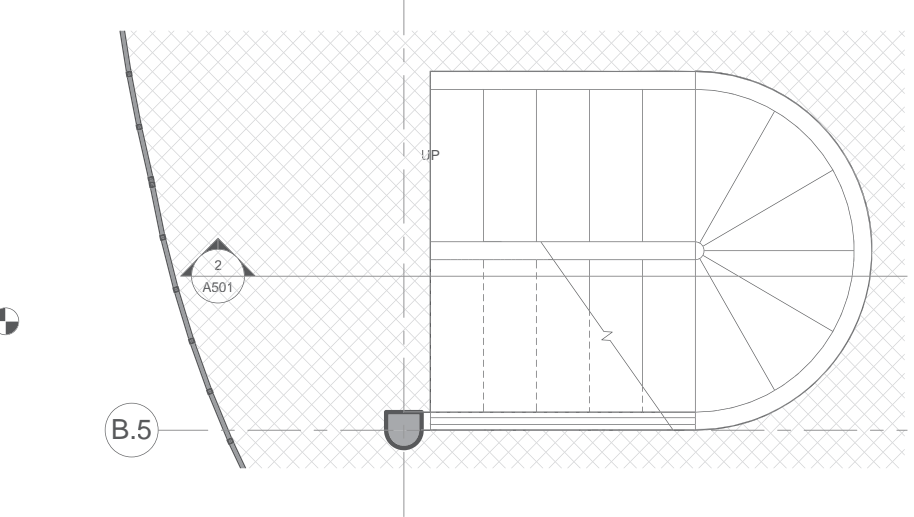
2 Stair Section  
1/2" = 1'-0"



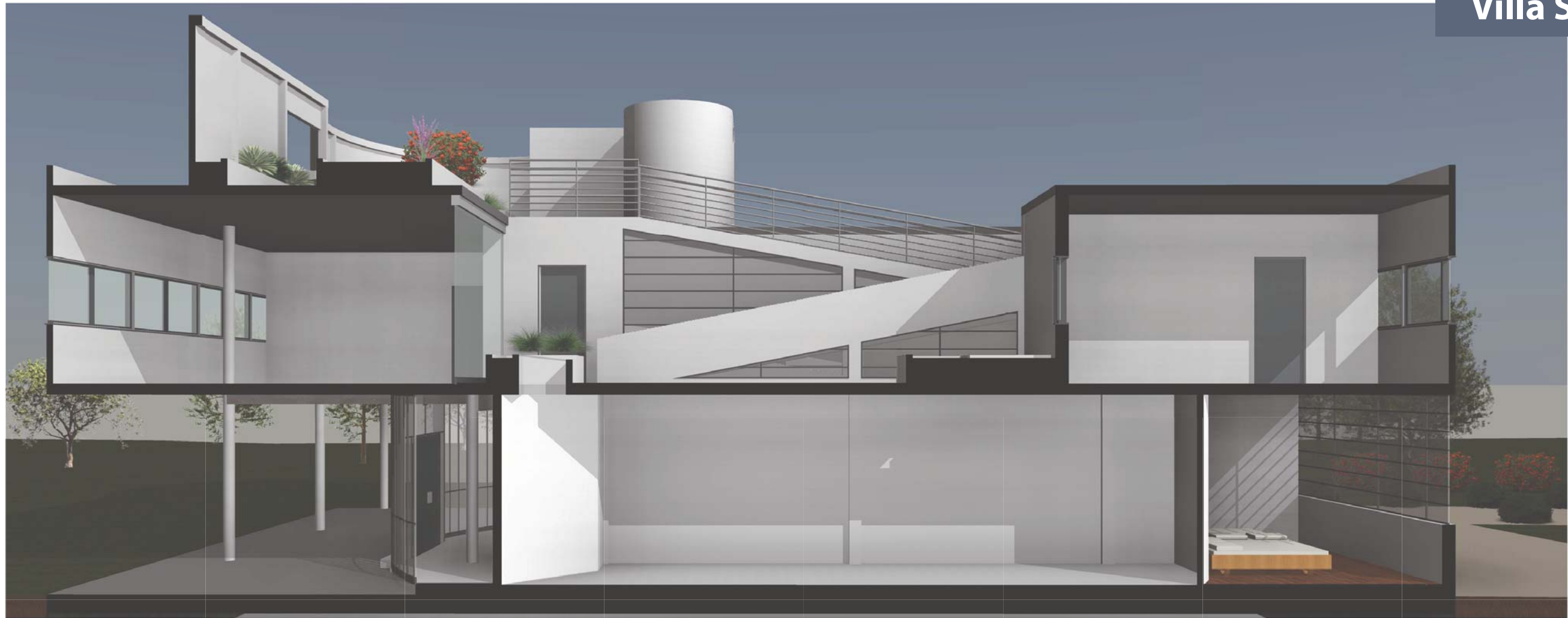
5 Callout of Solarium  
1/2" = 1'-0"



4 Callout of Level 1  
1/2" = 1'-0"



1 Callout of Ground Level  
1/2" = 1'-0"



① Section Perspective 1



② Section Perspective 2



③ Section Perspective 3

# Beech House

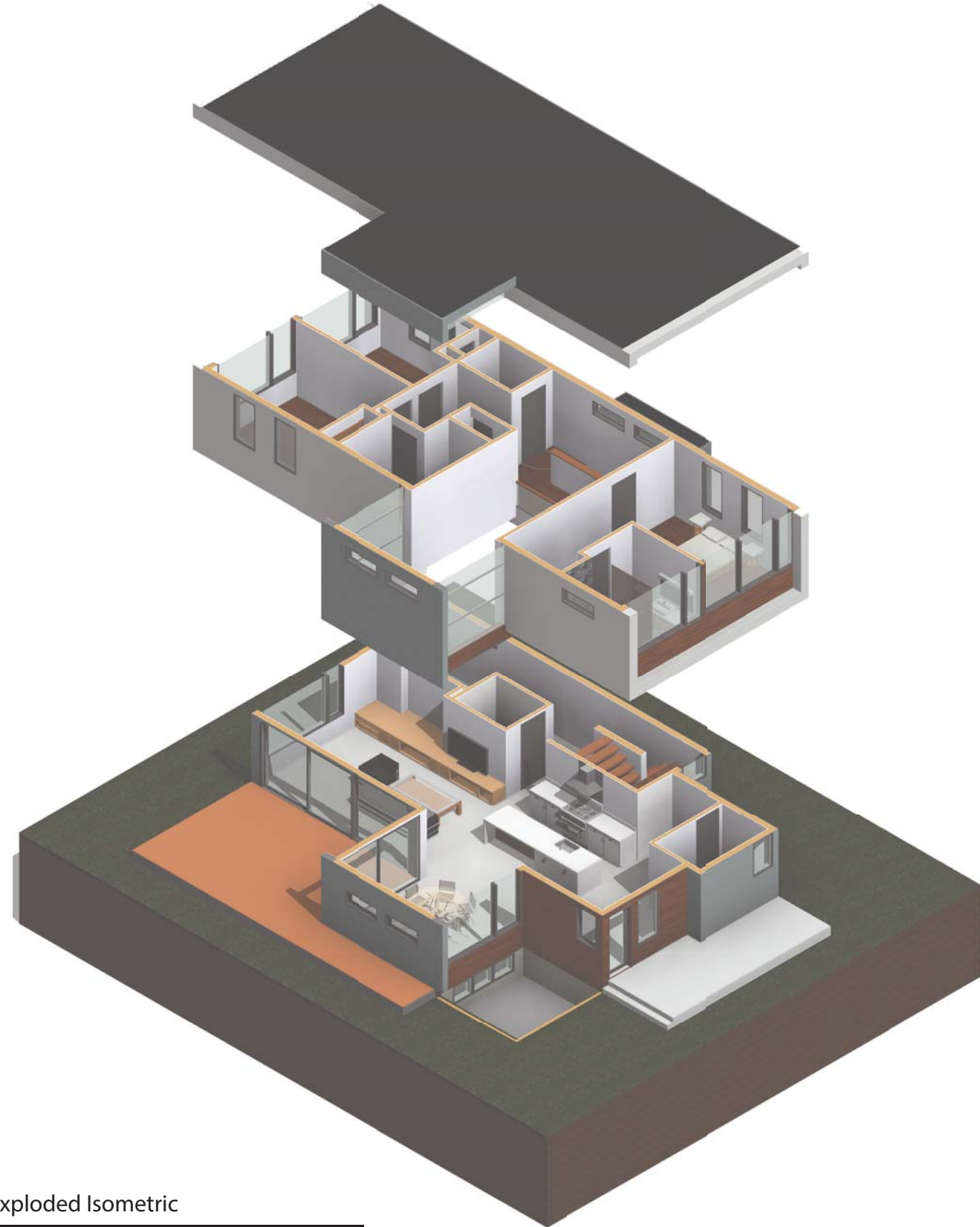


Rendering of front entry

**Course:** ADC 273: Advanced CAD Applications

**The Task:** Create a digital representation of the BEECH House by Altius Architects.

**Approach:** This project required the utilization of advanced features found in Autodesk Revit. The challenge was the limited amount of building specifications provided as well as the custom materials and models required to properly represent this home.



3D Exploded Isometric



South-West Corner



South-East Corner

# Beech House

## Renderings



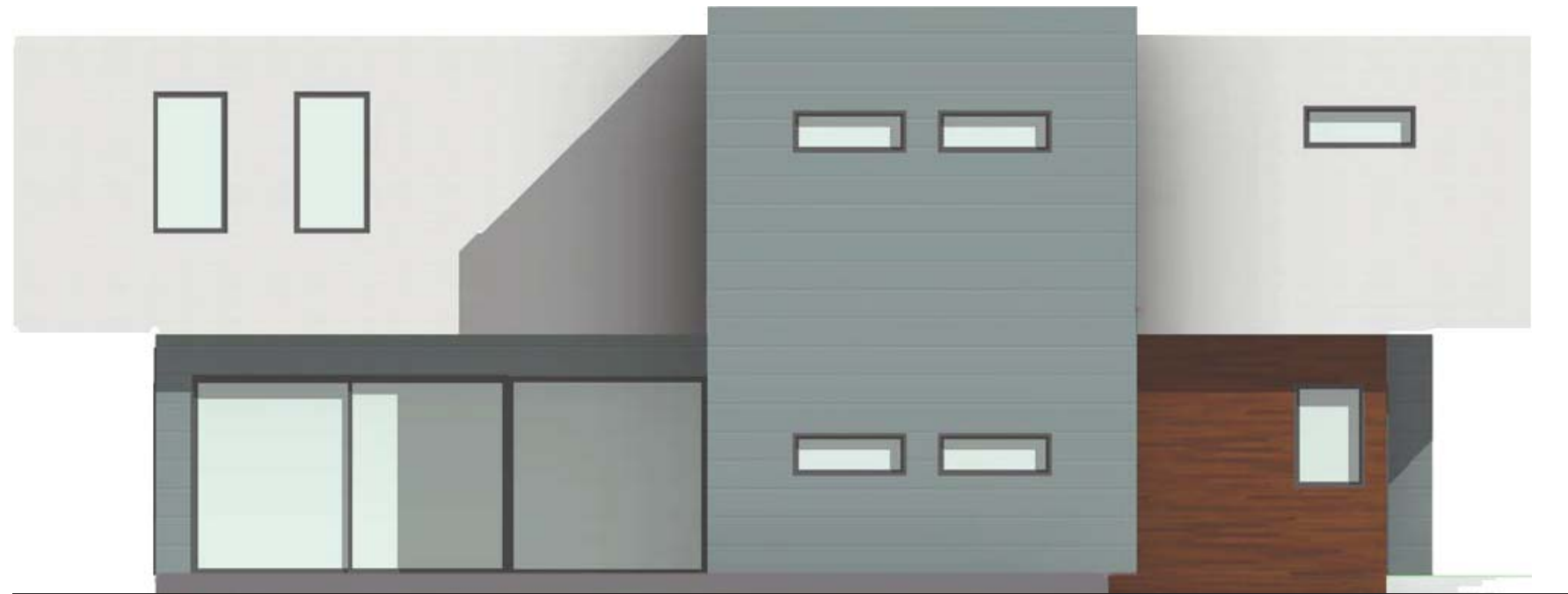
Kitchen From South



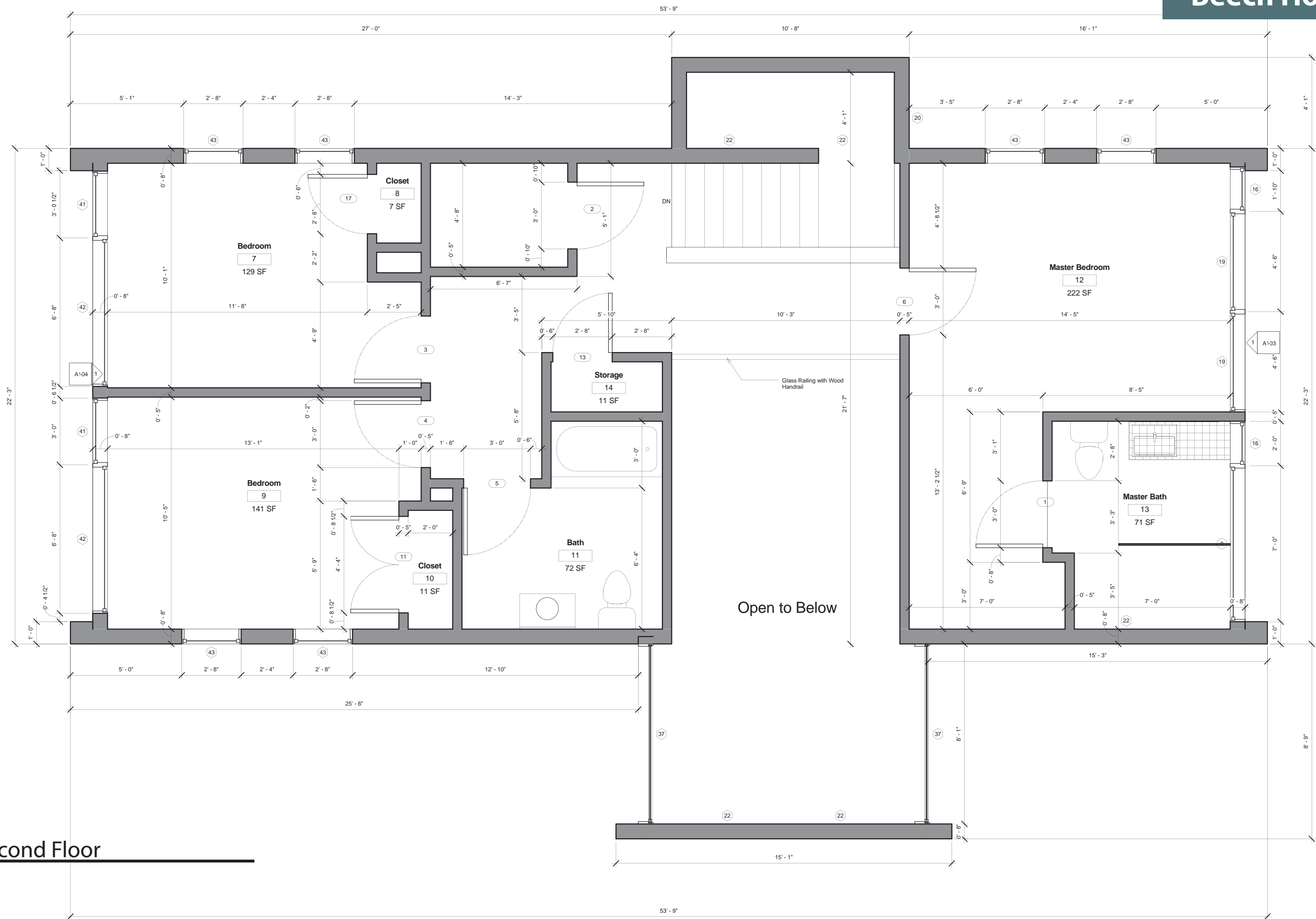
Kitchen From East



Dining Area



South Elevation



**Second Floor**